

KC 7-Pin Motor Cable Connector

Kupo PLS-4207 multiple connectors are often applied to combine chain hoist power and control cable as one. It makes a safe, compact and quick setup rigging. Two rugged die cast aluminum alloy half shells in black non-conductive finish for easy cable assembly. Hard gold plated contacts in soldering version and fully compatible with Socapex SL37 family. The extended female ground contacts allow mating first / breaking last.

Electrical Characteristics

- Rated Current/voltage: 6 x 25A + 1 x 50A 250V
- Operation Limit Voltage (AC. V. Rms): 250
- Withstanding Voltage (AC. V. Rms): 2000
- Insulation Resistance (MΩMin) at DC 500V: 2000
- Contact Resistance (MΩMin) at DC 1A: 3
- Number Of Contacts: 7 Contacts: - 6 x 12AWG + 1 x 8AWG
- Operating Temperature: -40 + 85°C
- Hipot Test: 1800 VAC / min
- Terminal Wear: 5000 + Connections

Pin-out for 7pin Motor Connector: (according to ANSI / E1.6-4 2022)

- 1 = L1
- 2 = L2
- 3 = L3
- 4 = MOTOR UP
- 5 = GROUND
- 6 = MOTOR COMMON
- 7 = MOTOR DOWN

Important Note

There is no industry standard wiring for chain hoist using 7pin connector. Since mixing gear from different suppliers is a common practice, you should always double check the equipment and not assume the wiring is correct or has been changed. 7-pin connectors carry power and control together and there is a potential for harming the equipment or the operator if the wiring configuration is not confirmed.



PLS-4207LM

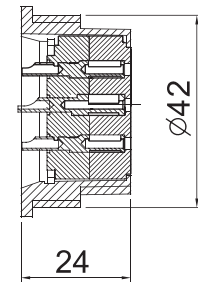


PLS-4207LF



PLS-4207SF

SF



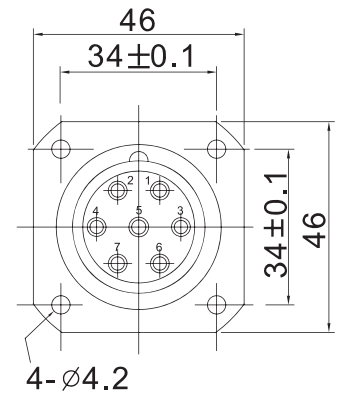
The reinforced locating tab on insert disk and keyway offer a spinning resistance.



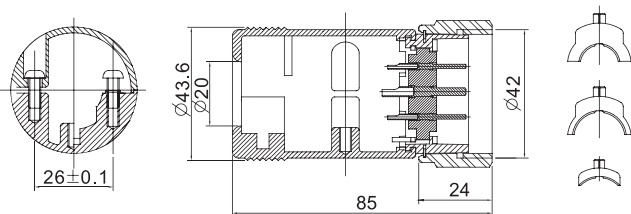
Casting shell inside with a body grounding boss guarantees full safety.



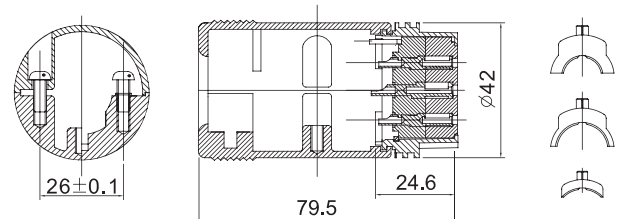
The standard line connectors come with 3 different size compression strain reliefs.



LM



LF



KUPO Dr.Harting & Dr.Soca

Dr. Harting and Dr. Soca are dual-function testers designed for diagnosing wiring on 19-pin Soca or Multipole (Letriflex/Harting) extension cables, as well as checking lamp/load status on lighting bars.

The LCD displays real-time test results through pin-to-pin scanning. Any wiring issue such as missing connections, swapped pins, shorts, or opens, is clearly shown on the screen. Operating instructions are laser-engraved on the main chassis for fast and intuitive use.

Press the "RUN" button to initiate testing and navigate operational modes. The auto-sense feature automatically switches between cable-testing and load-testing modes. The unit is powered by 4 x AAA batteries or an external 5-18 V adaptor, and it automatically powers off after 100 seconds of inactivity to conserve energy.

Threadless 19-pin connectors and open Multipole interfaces allow convenient access when working with extension cables. Both testers feature a lightweight, compact aluminum-alloy chassis and can be bolted to a work bench, providing a stable platform for cable-assembly work.



DR-H16 Dr. Harting

Tester for Multipole (Letriflex) 16-pin connectors.



DR-S19 Dr. Soca

Tester for Soca 19-pin connectors.

Threadless 19-Pin connector provides a swift and convenient plug-and-play.



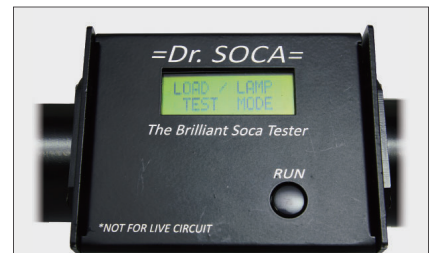
YOUTUBE
DR.SOCA
19PIN TESTER



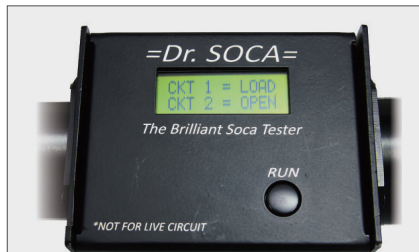
Cable Testing Mode



Real-Time Cable Test Result



Lamp / Load Testing Mode



Real-Time Load Test Result



DR.Soca can be used either with DC/5-18V Adaptor.



DR.Soca can be used either with 4 x AA Battery.



Roomy slot for hand-carry.



Other than cable tester, it also conduct lamp/load testing.



Bolted to a work bench without movement for better cable testing job.

KUPO 19-pin Cable Tester

The KUPO 19-pin Cable Tester is a compact and efficient tool designed for fast and reliable testing of 19-pin Soca extension cables. Built with a classic PLS-series connector, it is fully compatible with cable sets using major brands of Socapex-style connectors.

Simply connect the cable, and the tester automatically evaluates the circuit status. A rotary channel selector with six LEDs on the female connector allows users to check each channel individually. A red LED clearly indicates any wiring faults such as miswiring or open circuits.



YOUTUBE
KUPO 19-PIN
CABLE TESTER

Threadless 19-Pin connector provides a swift and convenient plug-and-play.



PLS-5219IDTR-M

ID Cable Tester, Male

PLS-5219IDTR-F

ID Cable Tester, Female

PLS-5219IDTR-PAIR

Complete set (Male + Female)



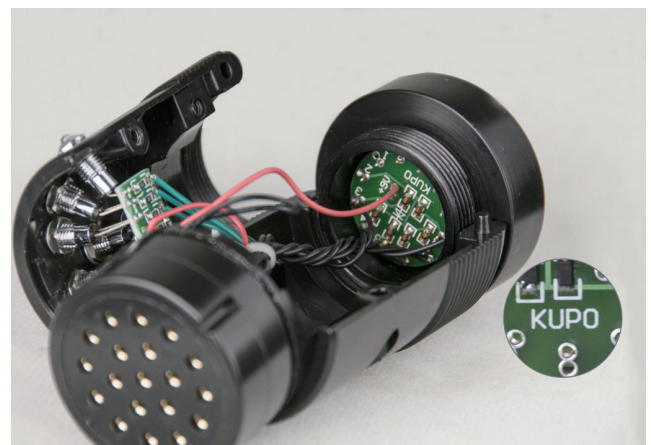
Designed for portable field use.



The tester features bright LEDs with reduced power consumption.



A buzzer provides audible warning if a short circuit is detected between the ground and live conductors.



All electronic components are PCB-mounted and securely interconnected for durability.

KUPO Digi-Check — Multi-Function DMX Diagnostic Tool

The KUPO DIGI-CHECK is a compact, multi-function device designed for DMX512 signal diagnostics and cable testing. It integrates a DMX detection module with a bright white LED torch light, making it an essential tool for technicians on the move.

Features

- 9 LEDs provide detailed indication of DMX signal and data-line status.
- Auto power-off after 120 seconds of inactivity to preserve battery life.
- Tool-free battery replacement.
- Supplied with a leather pouch and strap for maximum portability.
- CNC-machined anodized aluminum housing.
- Built-in white LED torch light.
- 3-pin and 5-pin XLR male and female connectors.
- Embedded DMX512 signal-level and load analyzer.
- Supports individual or installed data-line inspection modes.



DC-920 5-Pin Digi-check / Multi-function DMX Tester

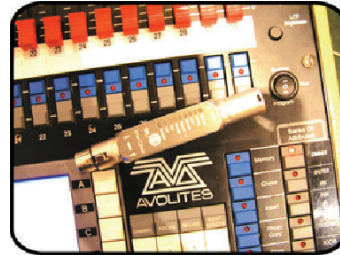
Dimension: 22 x 137 mm
Weight: 0.15kg

DC-930 3-Pin Digi-check / Multi-function DMX Tester

Dimension: 22 x 137 mm
Weight: 0.15kg

Specifications

- Power supply: DC 12 V / 1 A
- Battery: LR44 x 3 pcs (included)
- Supports DMX512 / 1990 protocol
- DMX connectors: XLR 5-pin x 2, XLR 3-pin x 2



YOUTUBE
KUPO DIGI-CHECK



Innovative Function

For testing pre-installed DMX lines, place one Digi-check at each end of the cable.
(Requires one XLR female adaptor for this operation.)



DS-TM3 DIGI-SIT / DMX Terminator (XLR 3 PIN)

DS-TM4 DIGI-SIT / DMX Terminator (XLR 4 PIN)

DS-TM5 DIGI-SIT / DMX Terminator (XLR 5 PIN)

A DMX terminator is essential for maintaining signal integrity in DMX512 systems.

It reduces signal reflections, stabilizes transmission, and improves overall DMX performance.

KUPO DMX Terminators include integrated protective circuitry and an LED indicator that confirms the presence of DMX data.

Dimension: 100(W) x 133(H) x 50(D) mm / Weight: 0.04kg