

## K-LOK 150A Single Pole Connector (Mini-Cam)

Mini-Cam is a series of 150 Amp light duty single pole connector in addition to heavy duty 400 Amp ones. Like its heavy duty family members, Mini-Cam is also constructed of Santoprene, possessing a superior performance in insulation. With enhanced features on safety designs and wider range of cable accommodation, Mini-Cam is the ideal and reliable connector for your own job.

### Technical Information

Voltage Rating	600V Maximum	Contact Material	Brass
Amperage Rating	150A Maximum	Terminal Accommodation	#8, #6, #4, #2
Base Compound	Santoprene 105 °C rated	Retaining Pin Material	POM

### Features

- Cable accommodation from #8 AWG to #2 AWG (for cable outside diameter up to 13.60 mm).
- POM (Polyformaldehyde) ring is two times longer than others for fully encompassing the brass contact for excellent insulation.
- Housing with large ribs for comfort gripping; prolonged body helps user to hold it firmly.
- Two additional longer set screws are supplied for maximum flexibility when smaller cable is used.
- Compatible with other brands of 150A cam-type connector.
- UL/CUL Certified



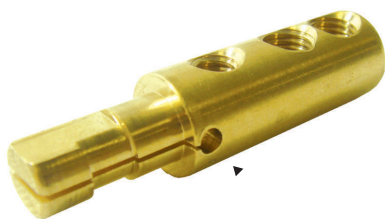
Double set screws ensure the cable sits firmly in position; longer set screws are supplied for securing smaller cables.



Boot made of UV-resistant Santoprene, providing excellent protection. Safer and more durable.



Cable size or cut-length identification clearly engraved on the boot.

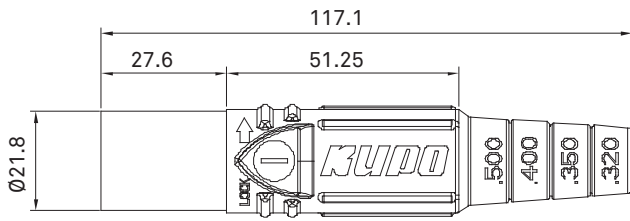


The tension hole at rear side of split contact retains the contact from over pressed, so as to prevent the loose mating after several time of uses.

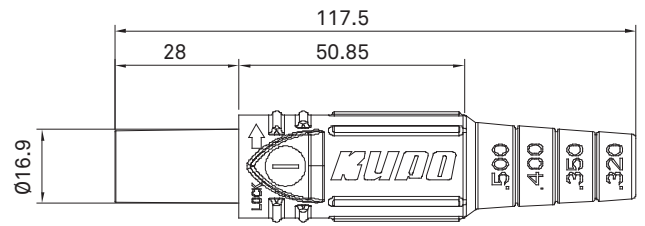


**KL-150-BS Retaining Pin**  
Retaining pin for 150A K-LOK

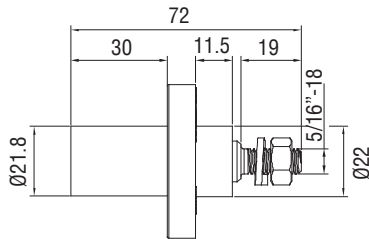
Line Male



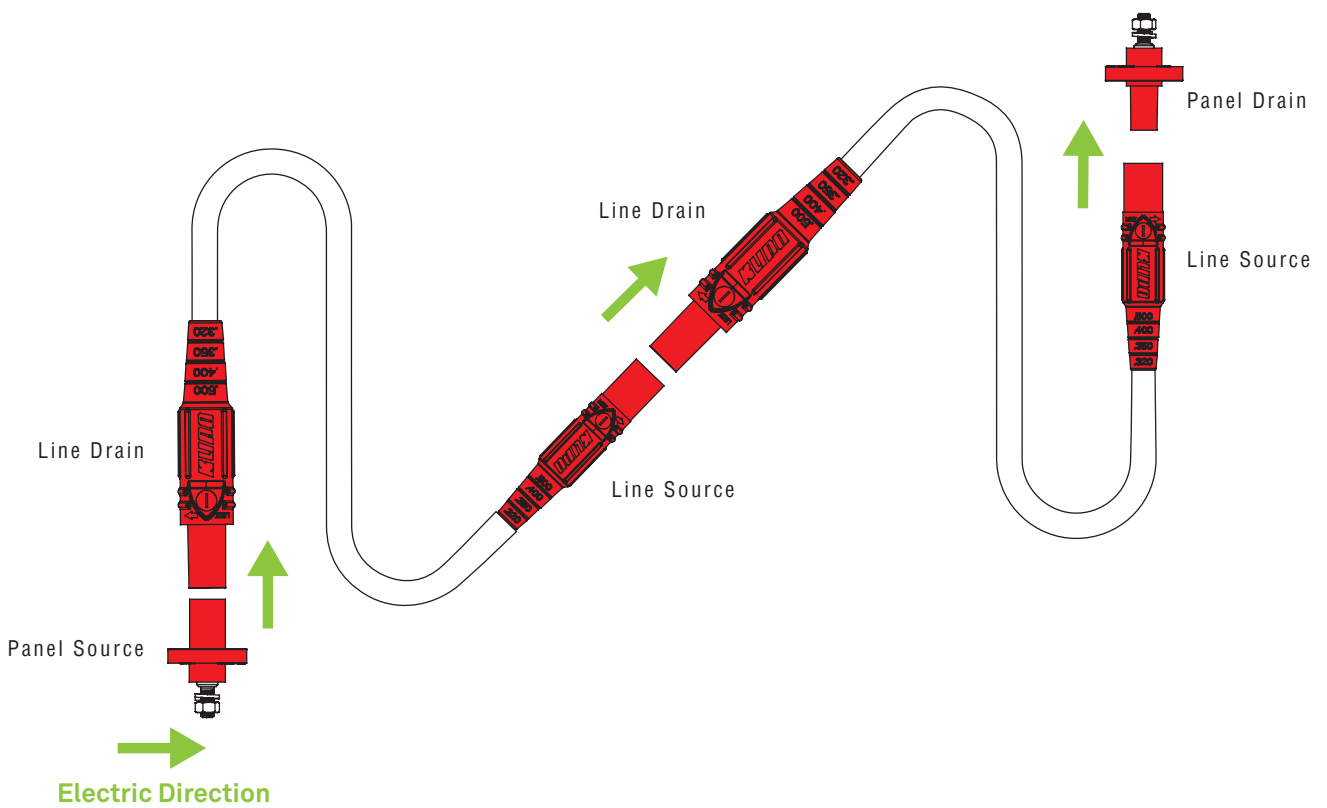
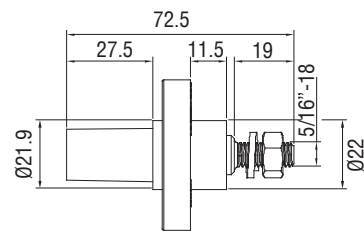
Line Female



Panel Male



Panel Female

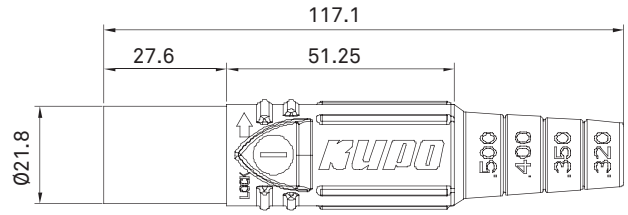


K-LOK Ordering Code Structure

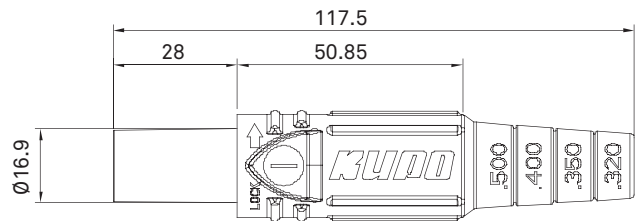
Series	Ampacity Rating	Type	Color	Cable Size (AWG)
KL	150	LM = Line Male	BK = Black	150A: #8 - #2
	400	LF = Line Female	R = Red	400A: #6 - 4/0
		SM = Panel Male (Screw & Nut)	B = Blue	
		SF = Panel Female (Screw & Nut)	W = White	
		SSM = Receptacle Male (Screw & Nut)*	G = Green	
		SSF = Receptacle Female (Screw & Nut)*	BN = Brown	
			GY = Gray	
			O = Orange**	
			Y = Yellow**	

\* Receptacle Male and female types are only available for the 400A connector.

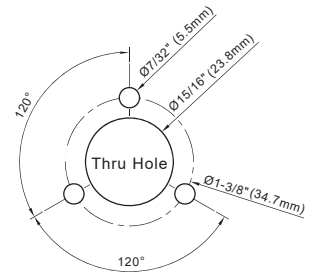
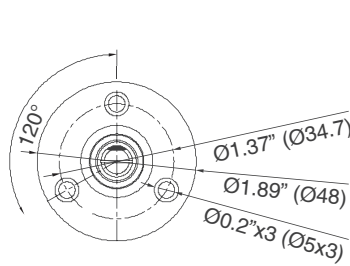
\*\* Orange / Yellow colors are only available for the 400A connector.



**KL-150LM** **BK** **R** **B** **W** **G** **BN** **GY**  
K-LOK 150A In-Line Male Type

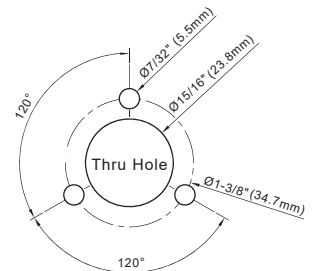
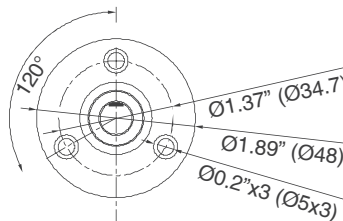


**KL-150LF** **BK** **R** **B** **W** **G** **BN** **GY**  
K-LOK 150A In-Line Female Type



Mounting Dimensions

**KL-150SM** **BK** **R** **B** **W** **G** **BN** **GY**  
K-LOK 150A Panel Male (Thread-Stud Type)

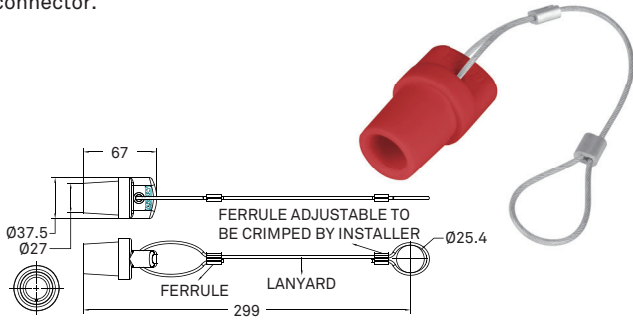


Mounting Dimensions

**KL-150SF** **BK** **R** **B** **W** **G** **BN** **GY**  
K-LOK 150A Panel Female (Thread-Stud Type)

### K-LOK Protective Cap

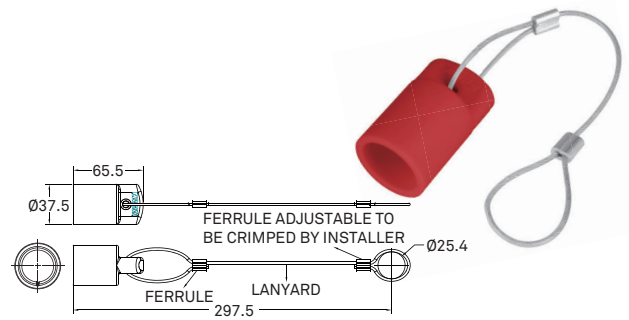
Available in both inline male and female variants, K-LOK Protective Cap is designed to seamlessly complement your cam-type connectors, ensuring a secure fit to meet NEMA 3R rating and safeguarding against dust, debris, and environmental elements. Crafted from high-quality Santoprene, the same durable material utilized in 400A & 150A connectors, this product guarantees exceptional reliability and longevity. Each cap comes equipped with a convenient lanyard for effortless attachment. Offered in a variety of colors to match the aesthetics of inline connector.



**BN GY Y O**

**KL-40MPC BK R B W G**

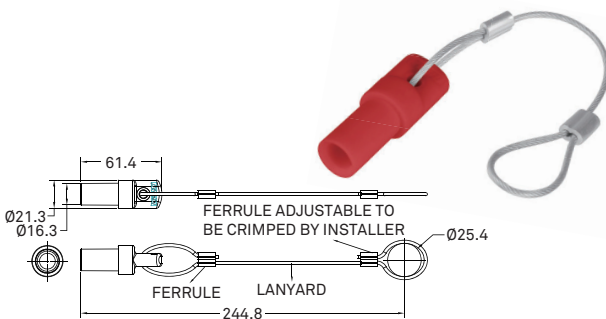
For 400A inline male connector



**BN GY Y O**

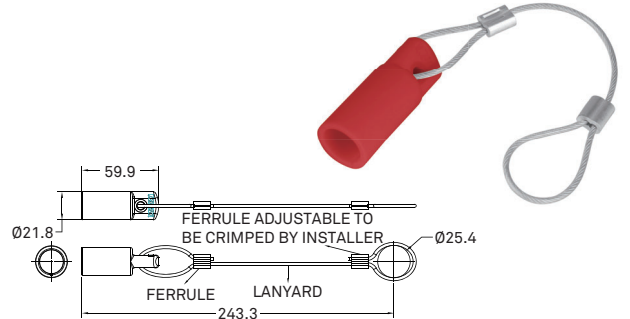
**KL-40FPC BK R B W G**

For 400A inline female connector



**KL-15MPC BK R B W G BN GY**

For 150A inline male connector

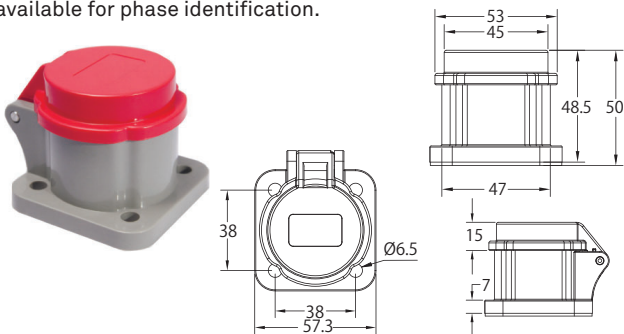


**KL-15FPC BK R B W G BN GY**

For 150A inline female connector

### K-LOK Weatherproof Snap Back Cover

Weatherproof snap back protective cover to fit all compatible brands of 400A cam type receptacles. Standard frame dimension allows retrofit existing application easily. The gasket offers a NEMA 3R rated environmental seal that provides a protection against falling rain, dust or frost, and also provides a safe way to cover exposed metal, while keeping the weather out when the receptacle is not used. Kupo Dust Cover is made from a high impact resistant, flame retardant ABS material and corrosion resistant stainless steel hardware. Five colors available for phase identification.



**KL-DC BK R B W G BN GY Y O**

For 400A Cam-Type Receptacle



**KL-DCT**  
K-LOK Clear Dust Cover For 400A Cam-Type Receptacle

Clear Dust Cover (KL-DCT) is made of polycarbonate, a tough and durable plastic. It is totally transparent and features see-through visual identification. Assembled with stainless steel hardware but no gasket is supplied.



**KL-DC BK R B W G BN GY Y O 2**

For 150A Cam-Type Receptacle

