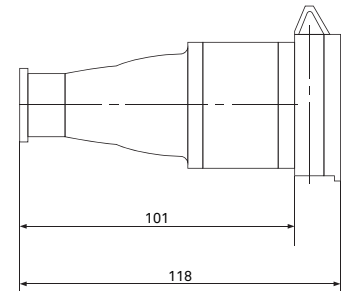
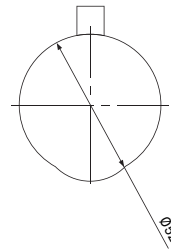


SCHUKO Connector

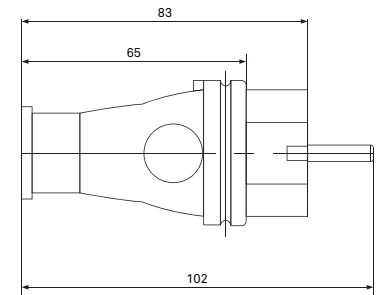
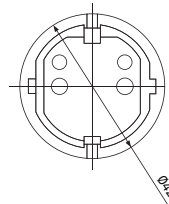
SCHUKO is a protective-contact plug system widely used across Germany and much of Europe. Its defining feature is a grounding design that engages the earth connection before the live contacts, providing enhanced protection against electric shock and a stable, reliable connection. KUPO offers a complete 16 A SCHUKO range, including plugs, inline connectors, inlets, and panel-mount receptacles, available as assembly-type versions with either rigid housings or rubber encapsulated bodies for added grip and durability.

Specifications

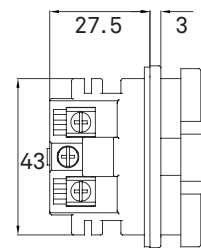
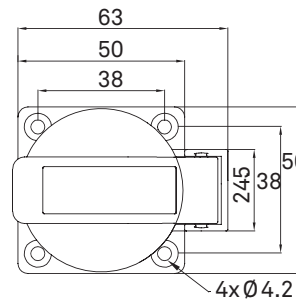
- 16A / 220-250 V, single phase rated
- Contact pins: Copper-plated nickel / 2P+E
- IP44 protection, splash-proof when mated
- Flame retardant PA66 housing (rubber)
- International safety certification: CE



R212 Schuko Connector (Rubber)



R012 Schuko Plug (Rubber)



CZ03 Schuko Panel Socket



131 Schuko Plug

1602 Schuko Connector

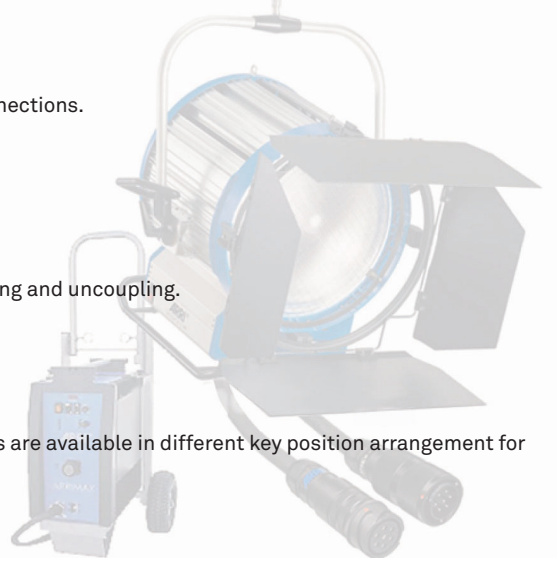
Head-to-ballast Connector

The KUP0 HB connectors' range is designed to meet the needs of head to ballast connections. HB series cover the range of power from 575W to 18KW used by Arri.

Features

- Compatible with Veam CIR connectors.
- Machined aluminum bodies with ribbed coupling ring to provide easy manual coupling and uncoupling.
- Back-shell with scratch resistant and black anodized.
- Back-shell and cable clamps to fit different cable O.D.
- Waterproof to IP67.
- The grip rubber on locking ring.

We keep all the models in stock for inline male and female assembly. WPC-2407 series are available in different key position arrangement for various lighting fixtures, WPC-2806 & WPC-2809 series are only for 6K-18K Arri lights.



WPC-2407LMG



WPC-2407LFG



WPC-2806CLFG



WPC-2806CLMG



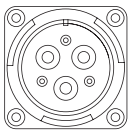
WPC-2809CLFG



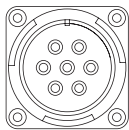
WPC-2809CLMG



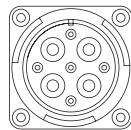
Contacts Configuration & Key Position Arrangement



6 PIN 2806



7 PIN 2407



9 PIN 2809

Solder Type		7 PIN (for 575W - 4KW)		6 PIN	9 PIN
		Key (Z)	Key (W)	Key (O) (for 6KW)	(for 12/18KW)
WPC	Line Male		2407LMG-W	2407LMG-O	2806LMG
	Line Female		2407LFG-W	2407LFG-O	2809LFG
	Panel Female		2407SF-W	2407SF-O	2806SF
WPS	Line Male	2407LM-Z	2407LM-W		
	Line Female	2407LF-Z	2407LF-W		2809LF
	Panel Male		2407SM-W	2407SM-O	
	Panel Female		2407SF-W		2806SF
Crimp Type	Line Male				2806CLMG
	Line Female				2809CLMG
	Panel Female				2806CLFG
	Panel Male				2809CLFG
WPC	Panel Female				2806CSF
WPS	Panel Male	2407CSM			2809CSF

Cross Reference for Various Brands

BRAND	ARRI	CINEMILLS	STRAND	MOLE	SUNRAY	LTM	DE-SISTI
575W	2407-W	2407-Z	2407-Z	2407-Z	2407-Z	-	2407-Z
1200W	2407-W	2407-W	2407-W	2407-W	2407-W	-	2407-W
2500W	2407-O	2407-O	2407-O	-	2407-O	2407-O	2407-O
4000W	2407-O						
6000W	2806						
12KW	2809						
18KW	2809						

XLR Connector

This industry-standard XLR connector is designed for professional audio, video, and stage lighting applications. Its compact and robust construction features a die-cast shell, fiberglass-reinforced insert, and a secure chuck-type strain relief. The gold-plated pins ensure excellent conductivity, resistance to corrosion, and long-lasting performance. It is ideal for balanced audio connections as well as lighting control and low-voltage power applications.

Specifications

- Gold-plated pins for superior conductivity and corrosion resistance
- Durable die-cast shell with compact design
- Fiberglass-reinforced insert for high stability
- Secure chuck-type strain relief for reliable cable clamping



XLR3-LM-G
XLR 3 pin line male, gold-plated pin



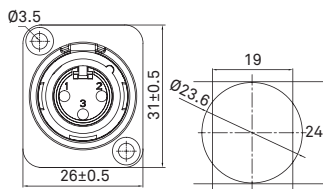
XLR3-LF-G
XLR 3 pin line female, gold-plated pin



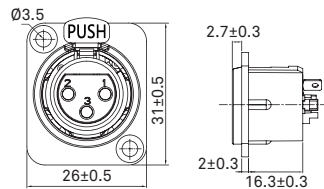
XLR5-LM-G
XLR 5 pin line male, gold-plated pin



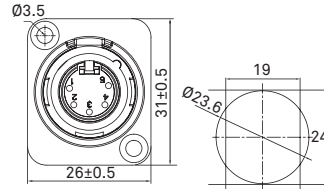
XLR5-LF-G
XLR 5 pin line female, gold-plated pin



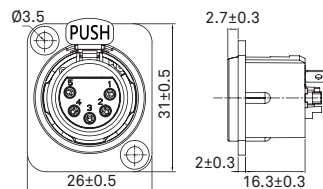
XLR3-SM-G
XLR 3 pin panel male, gold-plated pin



XLR3-SF-G
XLR 3 pin panel female, gold-plated pin



XLR5-SM-G
XLR 5 pin panel male, gold-plated pin



XLR5-SF-G
XLR 5 pin panel female, gold-plated pin



AD-3M5F
Adaptor for XLR 3 pin male to 5 pin female.



AD-5M3F
Adaptor for XLR 5 pin male to 3 pin female.



AD-5F5F
Adaptor for XLR 5 pin female to 5 pin female.



AD-3F3F
Adaptor for XLR 3 pin female to 3 pin female.



XLR-WPC XLR Water Proof Cover

XLR-WPC is designed to protect XLR connector from wet and dust. See-through transparent PVC body helps check up mating status easily. Feasible for O.D. 4-6 mm cable. IP66.



XLR-BJS Black Jelly Sleeve

XLR-BJS is silicon made sleeve for XLR cables with superior protection, especially for those ready-made cables without protection on connector in advance. With this elastic black silicon sleeve, the ordinary cable is prompted with additional shield. IP65 while mated and feasible for 3pin and 5pin XLR.

DMX Data Transmission Cable

The XLR Color-Coded ID Ring is a practical accessory designed for easy cable management and identification. Made of durable PA material, these color-coded rings can be quickly attached to any standard XLR plug without the need for unsoldering the insert. Available in multiple colors, they allow users to distinguish between different cables at a glance, ensuring faster setup and improved workflow efficiency.



ID Ring is designed for identification.

Six standard colors are available.

- ID RING-W White Color
- ID RING-B Blue Color
- ID RING-R Red Color
- ID RING-Y Yellow Color
- ID RING-P Purple Color
- ID RING-GN Green Color

KUPO Linear Data Distribution Box

Introducing the RJ45 to XLR Data Distribution Box, the perfect solution for distributing DMX data from your device in between EtherCon (RJ45) and 5Pin XLR connectors. Crafted from high-quality aluminum, this compact and durable box is designed for portable use and built to last. Its sleek and sturdy housing provides reliable protection for your valuable data connections, making it the ideal choice for professionals on the go. With its RJ45 and 4 x XLR connectors, this Data Distribution Box is versatile enough to be used in a wide range of applications, including live events, concerts, theaters, and more. It provides a seamless and reliable connection between your EtherCon (RJ45) device and your XLR equipment, allowing you to focus on your performance without worrying about data loss or interference. Whether you're a DJ, lighting designer, sound engineer, or any other professional in need of a reliable data distribution solution, the Data Distribution Box is the perfect choice.



PDB-E1401M RJ45 to 4 x 5Pin XLR Male

Features

- Designed as EtherCon (RJ45) to XLR adapter for DMX data connection
- Made of sturdy aluminum housing, lightweight and durable
- Surface treatment with black non-conductive hard anodizing
- Equipped with low profile bracket for attaching lighting clamp
- Available with 5Pin male XLR or 5Pin female XLR connectors

Pin and wiring definition of this box refers to the following:

Wiring / Connector	XRL2	XRL3	XRL4
Data Common	Pin 1	Pin 1	Pin 1
White & Orange		Pin 3	
Orange		Pin 2	
White & Green	Pin 3		
Green	Pin 2		



PDB-E1401F RJ45 to 4 x 5Pin XLR Female

Low profile bracket makes the box easy to assemble with a lighting clamp for truss mounting



Wiring / Connector	XRL1	XRL2	XRL3	XRL4
White & Blue				Pin3
Blue				Pin2
White & Brown	Pin 3			
Brown	Pin 2			

Kupo RJ45 to XLR adapter cable

Kupo RJ45 to XLR adapter cable is designed to provide seamless connectivity between devices with different ports. This versatile cable features an RJ45 connector on one end and a 5pin XLR connector on the other, allowing you to connect devices with ease.

Crafted using high-quality CAT6 UTP 24 AWG black cable, this adapter cable delivers reliable performance and durability, ensuring long-lasting use. The cable measures 50cm in length, and longer length is available on request. Available in two versions - the 5pin XLR male and the 5pin XLR female. Choose the version that best suits your needs and enjoy effortless connectivity between devices.

Features of CAT6 UPT 24 AGW cable

- Pure copper wire cores for low impedance and minimal signal loss
- 8-core twisted pair structure minimizes interference for stable signal transmission
- PVC outer coating is durable, tough, and resistant to deformation
- Passed Fluke test for quality and performance assurance
- Available with 5Pin male XLR or 5Pin female XLR connectors



EXE-RJ2X5M-05
50cm CAT6 Adapter Cable, RJ45 To 5Pin XLR Male



EXE-RJ2X5F-05
50cm CAT6 Adapter Cable, RJ45 To 5Pin XLR Female

KUPO E-Armor

All-new E-Armor Premium makes DMX signal connecting over Ethernet cable easiest ever. With increasing adoption of Ethernet cable by audio, LED screen and lighting equipments, conventional RJ45 is not enough to fulfill the diverse applications, particularly when DMX signal have to daisy chain over different devices and might encounter compatibility issue. E-Armor Premium comes to eliminate the inconvenience and bring up most comfort while handling such signal cable set.



Standard Package

E-ARMOR-P Ethernet Armor (Premium)



E-Armor Premium features rapid removal of front shell, which turns this Ethercon-compatible to RJ45 immediately. No need to dismantle while using it to attach RJ45 outlet. Front shell is made of die-cast aluminum alloy, rigid and free from deformation over frequent handling. RJ45 latch protector ensures latch won't get broken easily in heavy operation.



1 Take the front shell.



2 Align the key to the slot.



3 Attach, turn, snap!



4 Voila! From RJ45 to Ethercon-compatible is just that easy!

Portable DMX Data Cables

High-quality, flexible DMX data cables for professional lighting control. Built with tinned-copper conductors, foamed-PE insulation for stable signal geometry, 100% aluminum/mylar foil shielding with a dedicated tinned-copper drain wire, and a matte black, flame-retardant jacket that resists UV- and fungus-resistant. Specifications are ETL-verified for DMX512 performance. Perfect solution for DMX512 control runs, console-to-dimmer links, trunk-line and universe distribution wiring, and portable rigs in rental, touring, theater, architectural, and themed environments.



KCWDP222TBK

1-pair DMX



KCWDP224TBK

2-pair DMX

Features

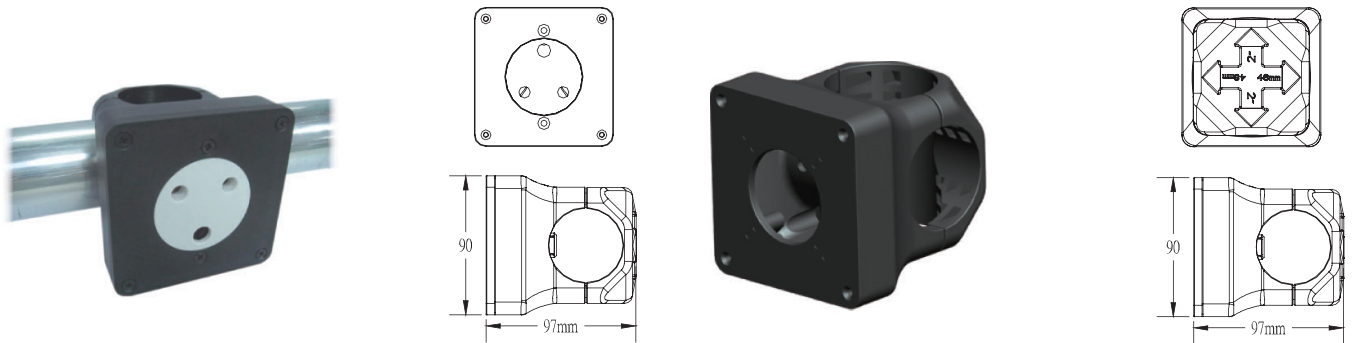
- Flexible construction for portable use and tight bends
- Foamed-PE insulation on color-coded pairs for low capacitance
- 100% aluminum/mylar foil shield with a 22 AWG tinned-copper drain wire
- Matte black soft-PVC jacket (RAL 9005), flame-retardant, UV/fungus resistant
- Fully tested; DMX performance verified by specification (ETL)

Parameter	KCWDP222TBK	KCWDP224TBK
Pair count / cores	1 twisted pair / 2 cores	2 twisted pairs / 4 cores
Conductor	22 AWG (0.34 mm ²) tinned copper, 16/0.20 mm	
DC resistance (20 °C)	1.0758 Ω / 100 m	1.0863 Ω / 100 m
Insulation	Foamed PE, red/blue	Foamed PE, red/blue & white/green
Overall diameter	5.2 mm ±0.3 mm	8.3 mm ±0.3 mm
Characteristic impedance	76.3 Ω @ 250 mHz	99.4 Ω @ 250 mHz
Shield / drain	Aluminum/mylar foil, 100% coverage / 22 AWG tinned copper drain	
Jacket	Soft-PVC, matte black (RAL 9005), UV & fungus resistant	
Temperature range	-40 °C to +80 °C	
Working / test voltage	30 V / 500 V	
Compliance	CE Directive 72/23 EEC; IEC 332 Part 1 (flame)	

KUPO Versatile Socket

Versatile Socket is fabricated by injection-molded ABS featuring impact resistance, maximum toughness and also flame-retarded. Two-way assembly housing provides the selection to fit either 2" or 48mm tube systems, which makes it an ideal power outlet for various installation applications. It is designed for 15A round pin BS546, 13A rectangular pin BS1363, 16A CEE form and 16A Schuko connectors.

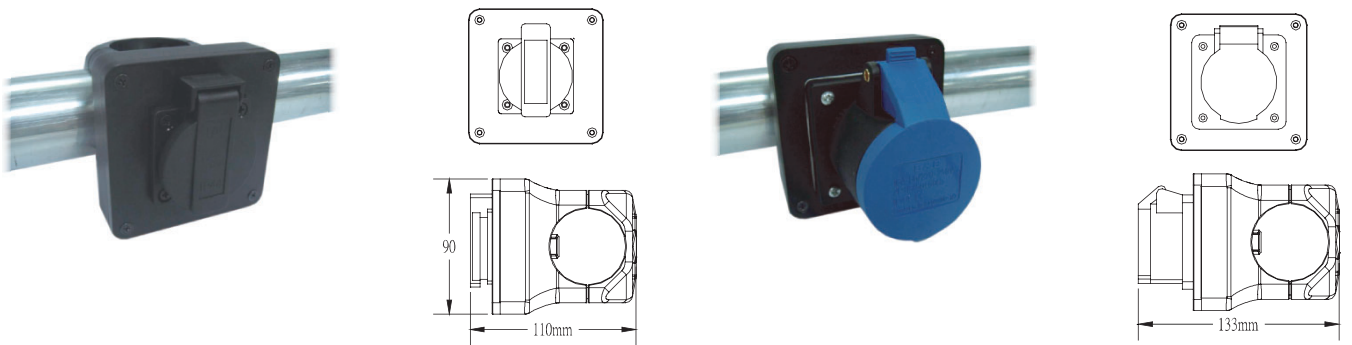
Standard Applications



VS-4851-B Versatile Socket

For 15A / BS546 & 13A / BS1363

Standard package w/ 8 fixing screws feasible for tube sizes 48mm and 2".



VS-4851-M Versatile Socket

For Schuko or CEE form 16A connector

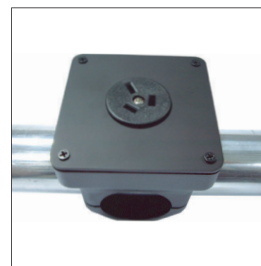
Other Applications (Customized)



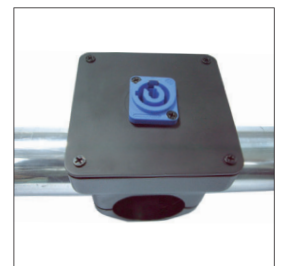
VS-4851-1 Versatile Socket

Blank Plate Only (w/o fixing base)

AUS/NZ 10A



Powerlead



Stage Pin



Speakcon



Blank



XLR



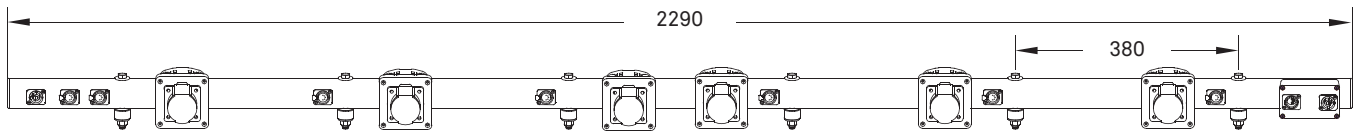
KUPO DMX Lighting Bar

The VS Lighting Bar is launched with the high quality that Kupo Par Bar has been known for, featuring new construction of the bar with versatile socket. With the classic 3.25mm(T) x 51mm(dia.) aluminum alloy tube in selective length together with ABS-injected versatile socket for seating the power panel, VS Lighting Bar is going to fulfill both conventional and uprising mainstream LED fixtures in entertainment field. VS Lighting Bar has diverse models. The DMX model is wired with 20A power connector for main input and output, as well as 5-pin XLR for DMX in and thru connection. It is available in 4-outlet and 6-outlet, and each outlet comes one VS socket with Schuko female and DMX female for power and data connection for every single fixture. The DMX model is designed to meet the demand for LED fixtures. The conventional model is wired with 19-pin panel male for dimmer control, and Schuko or CEE is mounted on versatile socket in this range. Special configuration is available upon request.

Schuko



CEE



PB-606VSS-P2 Polish, with Schuko Outlet

PB-606VSC-P2 Polish, with CEE Outlet

PB-606VSS-B2 Black, with Schuko Outlet

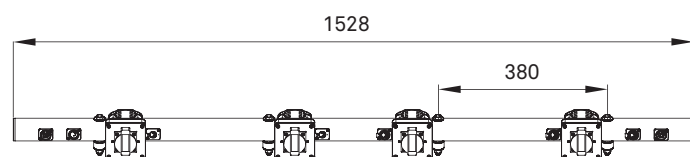
PB-606VSC-B2 Black, with CEE Outlet

6-Way Lighting Bar each with 20A power in/out connectors, versatile socket & Schuko or CEE outlet; each outlet with 5-pin XLR DMX out.

Schuko



CEE



PB-604VSS-P Polish, with Schuko Outlet

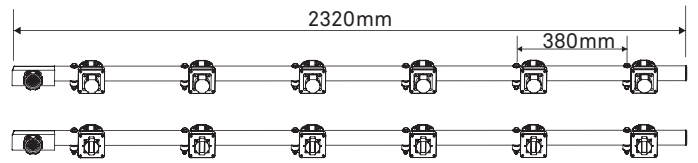
PB-604VSC-P Polish, with CEE Outlet

PB-604VSS-B Black, with Schuko Outlet

PB-604VSC-B Black, with CEE Outlet

4-Way Lighting Bar each with 20A power in/out connector, versatile socket & Schuko or CEE outlet; each outlet with 5-pin XLR DMX out.

KUPO Classic Lighting Bar



PB-606SC-P(B) / VSC Classic Light Bar

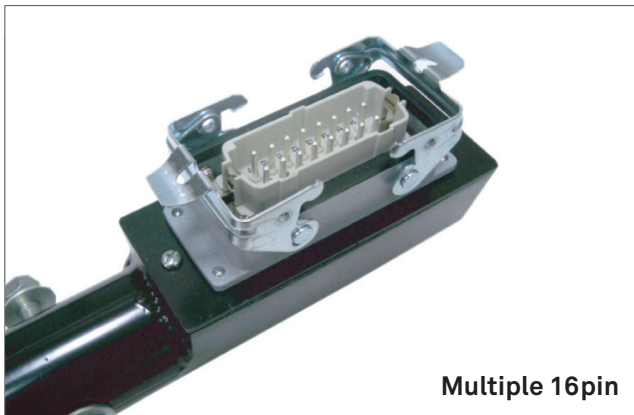
Light Bar with 19pin panel male as input; 6-way out with versatile socket and CEE panel female outlet.

PB-606SC-P(B) / VSS Classic Light Bar

Light Bar with 19pin panel male as input; 6-way out with versatile socket and SCHUKO panel female outlet.

All KUPO lighting bars are manufactured from dia. 51mm x 3.8mm thickness aluminum tube with a cast aluminum box. It comes with 65cm 3C x 1.5mmsq (16AWG) silicon cable for power connection. The following is our range of light bars; other variations of lighting bars are available upon request.

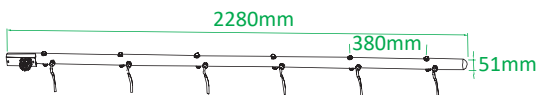
Classic Light Bar



Multiple 16pin



Soca 19Pin



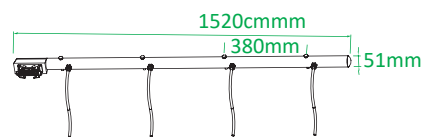
PB-606SC-B 6 circuits wired from 19 Pin chassis connector to 6 x 65cm tails black / polish.
PB-606SC-P



PB-604SC-B 4 circuits wired from 19 Pin chassis connector to 4 x 65cm tails black / polish.
PB-604SC-P



PB-606HC-B 6 circuits wired from 16 Pin male chassis connector to 6 x 65cm tails black / polish.
PB-606HC-P



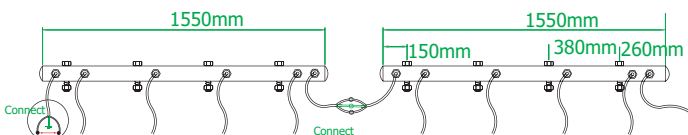
PB-604HC-B 4 circuits wired from 10 Pin male chassis connector to 4 x 65cm tails black / polish.
PB-604HC-P



PB-6062SC-B 6 circuits wired from 19 Pin male to 19 Pin female chassis connector to 6 x 65cm tails black / polish.
PB-6062SC-P



PB-604ASC-B Aerobar series wired from input to 4 x 65cm black / polish.
PB-604ASC-P



PB-604ASC wiring in 220V



PB-6042SC-B Aerobar series 4 circuits wired from 19 Pin chassis connector to 4 x 65cm tail with 2 more circuits at bar end black / polish.
PB-6042SC-P